


VERONA

TOWNHOMES

RUNDLE

WALK-OUT (MID UNIT 2)

MID UNIT WITH NO CANTILEVER

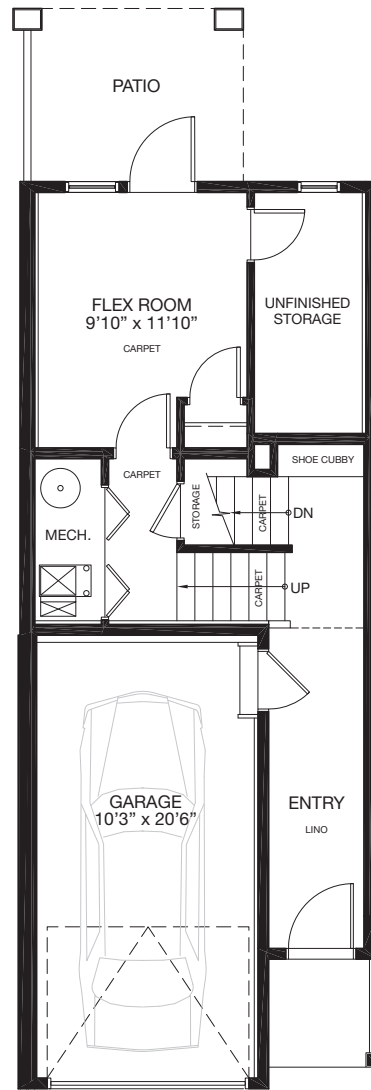
2 
1,554 SQ.FT.



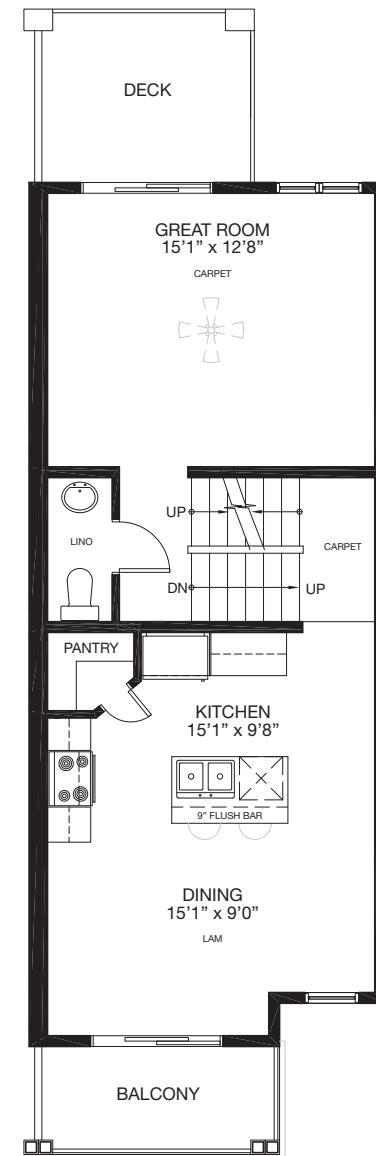
*Floorplan is an artist rendering only and may be subject to change without notice. Builder reserves the right to make modifications and changes to building design, specifications, features and floorplans without notice. Measurements and areas shown are based on pre-construction estimates and are approximate only. E.&O.E.

454 & 456 Sage Hill Grove NW | Calgary AB
Phone: 403.455.3771 | Email: verona@tricohomes.com

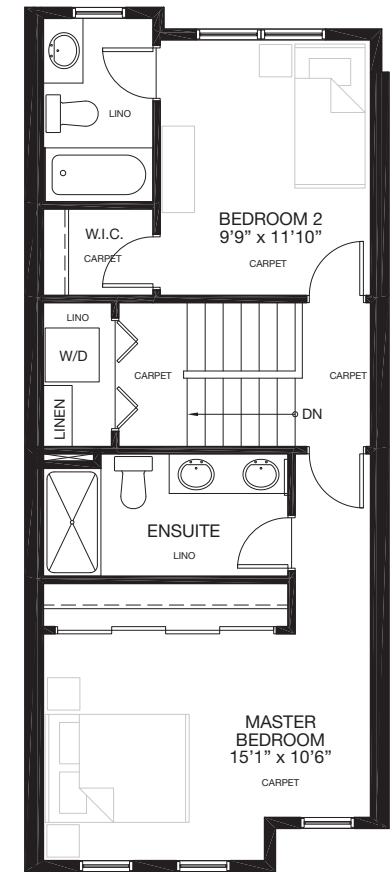
veronatownhomes.ca



ENTRY LEVEL
Finished Area: 304 Sq.Ft.



MAIN FLOOR
Finished Area: 630 Sq.Ft.



UPPER FLOOR
Finished Area: 620 Sq.Ft.


Options On Reverse

VERONA

TOWNHOMES

RUNDLE

WALK-OUT (MID UNIT 2)

2 
1,554 SQ.FT.

MID UNIT WITH NO CANTILEVER
Fully Developed: 1,619 Sq.Ft.

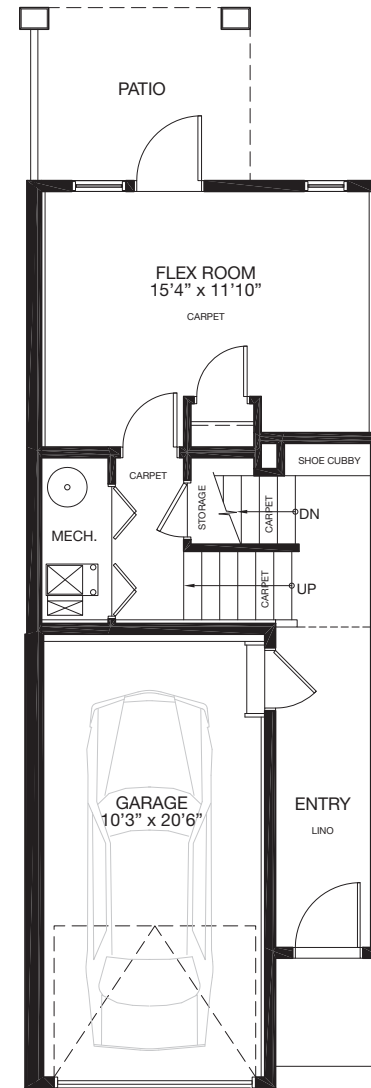


*Floorplan is an artist rendering only and may be subject to change without notice. Builder reserves the right to make modifications and changes to building design, specifications, features and floorplans without notice. Measurements and areas shown are based on pre-construction estimates and are approximate only. E.&O.E.

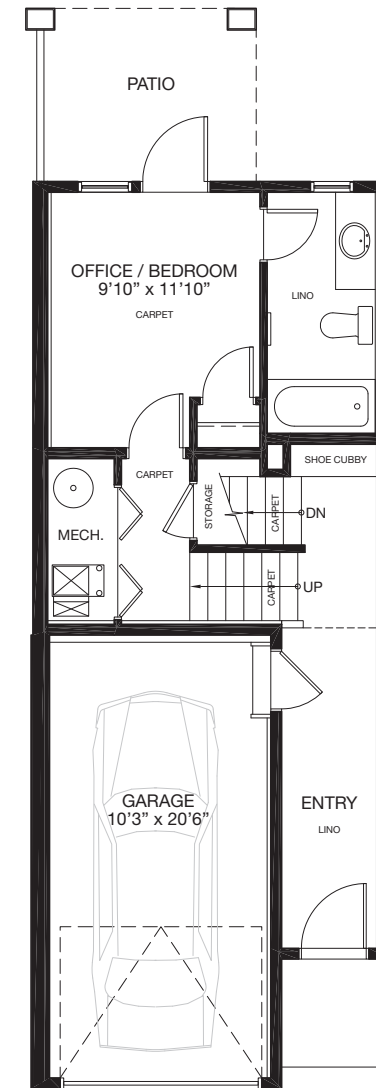
454 & 456 Sage Hill Grove NW | Calgary AB
Phone: 403.455.3771 | Email: verona@tricohomes.com



veronatownhomes.ca



ENTRY LEVEL OPTION 1
Finished Area: 369 Sq.Ft.



ENTRY LEVEL OPTION 2
Finished Area: 369 Sq.Ft.