


VERONA

TOWNHOMES

RUNDLE

WALK-OUT (END UNIT 1)

2 
1,587 SQ.FT.

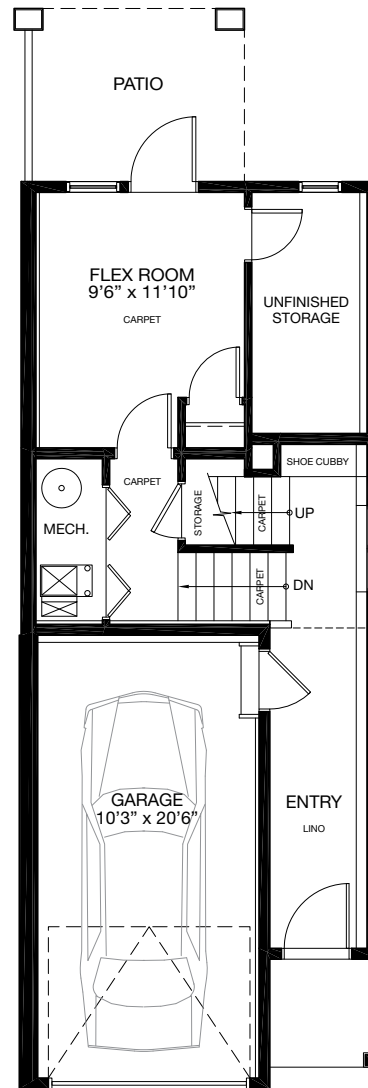
END UNIT WITH SIDE & FRONT CANTILEVER



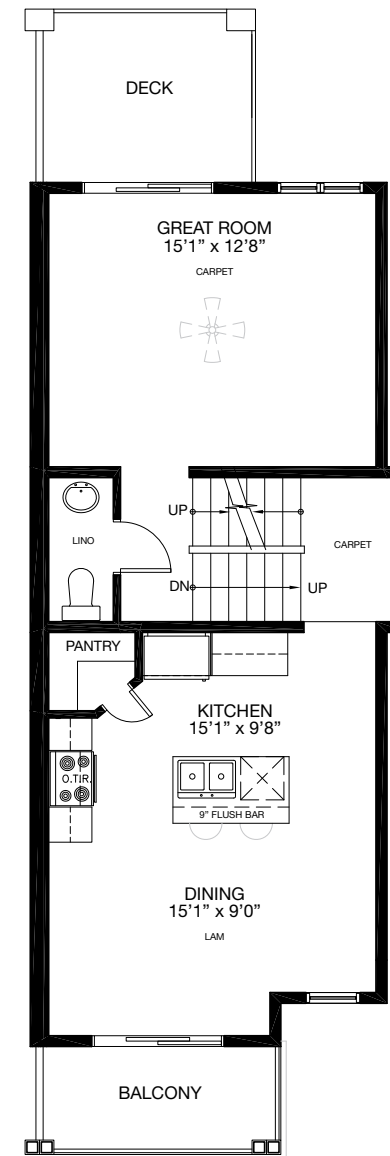
*Floorplan is an artist rendering only and may be subject to change without notice. Builder reserves the right to make modifications and changes to building design, specifications, features and floorplans without notice. Measurements and areas shown are based on pre-construction estimates and are approximate only. E.&O.E.

454 & 456 Sage Hill Grove NW | Calgary AB
Phone: 403.455.3771 | Email: verona@tricohomes.com

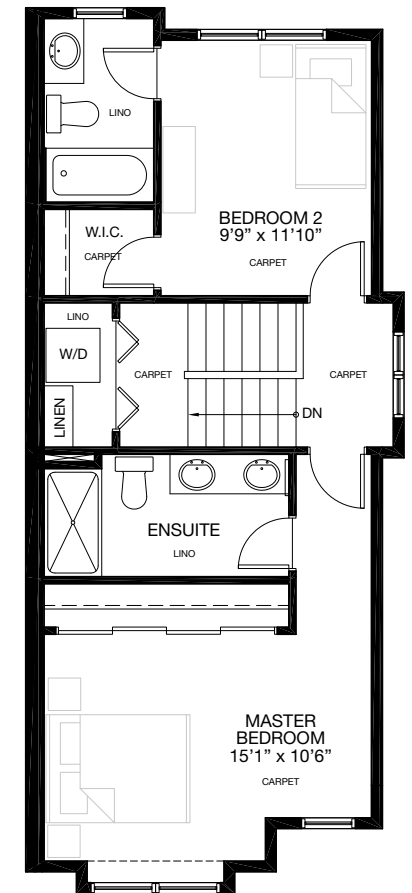
veronatownhomes.ca



ENTRY LEVEL
Finished Area: 308 Sq.Ft.



MAIN FLOOR
Finished Area: 641 Sq.Ft.



UPPER FLOOR
Finished Area: 638 Sq.Ft.


Options On Reverse

VERONA

TOWNHOMES

RUNDLE

WALK-OUT (END UNIT 1)

2 
1,587 SQ.FT.

END UNIT WITH SIDE & FRONT CANTILEVER
Fully Developed: 1,654 Sq.Ft.

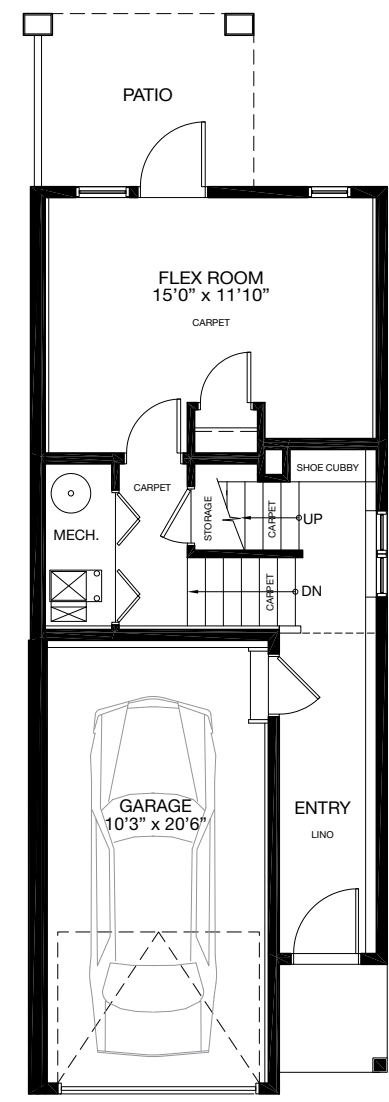


*Floorplan is an artist rendering only and may be subject to change without notice. Builder reserves the right to make modifications and changes to building design, specifications, features and floorplans without notice. Measurements and areas shown are based on pre-construction estimates and are approximate only. E.&O.E.

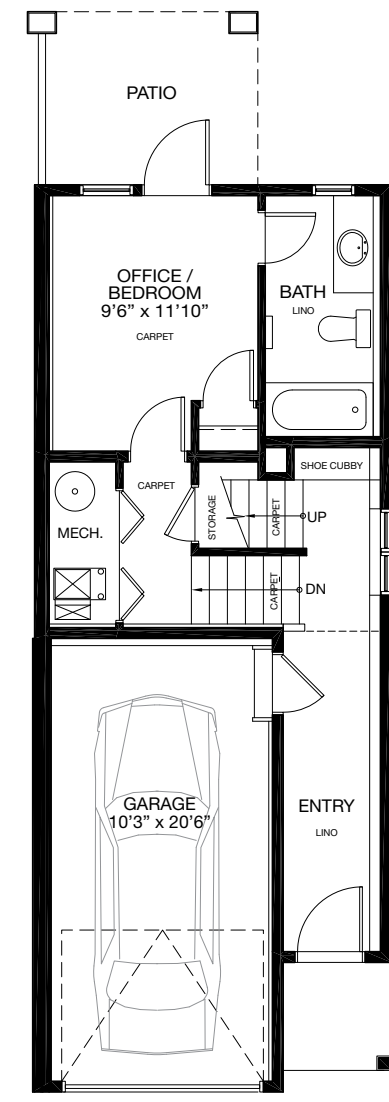
454 & 456 Sage Hill Grove NW | Calgary AB
Phone: 403.455.3771 | Email: verona@tricohomes.com



veronatownhomes.ca



ENTRY LEVEL OPTION 1
Finished Area: 375 Sq.Ft.



ENTRY LEVEL OPTION 2
Finished Area: 375 Sq.Ft.